

Administratives articulations

University

We are still student



Administratives articulations

University

We are still student



Doctoral school

ECOLE DOCTORALE
Terre, Univers, Environnement

Where you study

*IGE, ISTerre, IPAG, LEGI,
Pacte, IRSTEA, GIPSA lab*

Florence Thomas

Administratives articulations

University

We are still student



Laboratory

Where you work



Administrative service

Doctoral school

ECOLE DOCTORALE
Terre, Univers, Environnement

Where you study

*IGE, ISTerre, IPAG, LEGI,
Pacte, IRSTEA, GIPSA lab*

Florence Thomas

Administratives articulations

Employer

Who hire & pay you

Tutelle: CNRS, UGA, G-INP, IRD
Other: CIFRE, CNES, Gov., IRSTEA...

Laboratory

Where you work



Administrative service

University

We are still student



Doctoral school

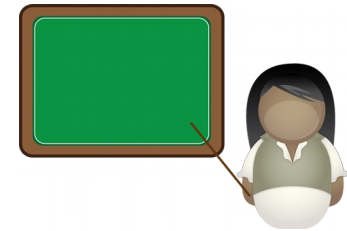
ECOLE DOCTORALE
Terre, Univers, Environnement

Where you study

IGE, ISTerre, IPAG, LEGI,
Pacte, IRSTEA, GIPSA lab

Florence Thomas

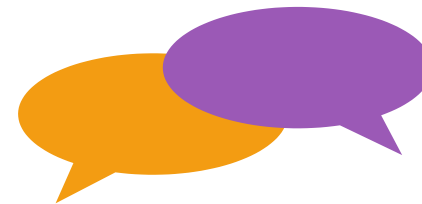
- CROUS, „bourse“
- Administrative reinscription
 - CVEC: 90€/year
 - Univ: 380€/year tried to be >2000€/y for non UE
- Attend & give some lectures
may need some cumul autorisation
- International student: ISSO
<https://international.univ-grenoble-alpes.fr/>



- Part of the University, 13 doctoral schools (gathered in CED)
- Has some funding for PhD conference, formation
- Re-enrolment (2nd, 3rd (4th?) year)

- **Thesis comitee**

- Once a year (at least)
- Discuss your science
- May raise some issue (scientific, relationship, ...)

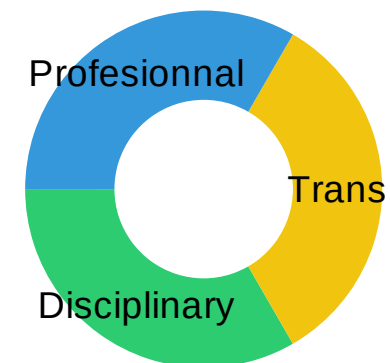


- **Formation** (120h)

- Breaking news: teaching hours !! 3h ETD = 1h

- ADUM

- *Not only for PhD, also for supervisor (HDR)*



The employer

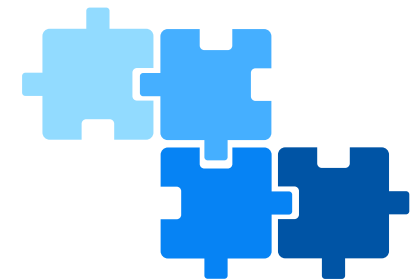
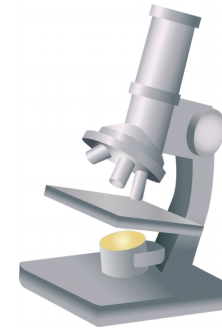


- Doctoral contract your work contract
- End of contract
- The lab is the link between your employer and you





- 4 tutelles CNRS, GINP, UGA, IRD
- „Daily life“ as PhD
 - Reasearch
 - Read your mail even if there is a lots...
- RH (first contact): ige-rh@univ...
 - Formations (IGE): ige-formation@univ...
 - Holidays, maternity/paternity, sick day...
 - Relationship
- Expense: ige-depenses@univ...
 - Tram pass, mission order, travel...
 - Commande



The „easiest“ place to get involve

- **Sociale security**

- Included in your work contract, but you need to chose either MGEN or CPAM.

- **Health insurance**

- Not included in your work contract: on top of the sociale security.

- CAF, impot, other? → you're on your own...

- Financial help: rent a flat, prime d'activité, etc.

(lab) accounts



IntraGère

webersa

Computer @ IGE
Intragère
(web)mail

...

All others are kind of linked to it

(lab) accounts



IntraGère

webersa

Computer @ IGE
Intragère
(web)mail
...



Agalan

webersa

University services
chamilo, jupyter, gitlab,
intranet, ficel, ...
Eduroam & Wifi-Campus

All others are kind of linked to it

(lab) accounts



IntraGère

webersa

Computer @ IGE
Intragère
(web)mail
...



Agalan

webersa

University services
chamilo, jupyter, gitlab,
intranet, ficel, ...
Eduroam & Wifi-Campus



Janus

samuel.weber@univ-
grenoble-alpes.fr

CNRS services
bibcnrs, mycore, ...
Agate (holidays)

All others are kind of linked to it

(lab) accounts



IntraGère

webersa

Computer @ IGE
Intragère
(web)mail
...



Agalan

webersa

University services
*chamilo, jupyter, gitlab,
intranet, ficel, ...*
Eduroam & Wifi-Campus



Janus

samuel.weber@univ-
grenoble-alpes.fr

CNRS services
bibcnrs, mycore, ...
Agate (holidays)

All others are kind of linked to it

And if you are IRD: **Sorgho**

(lab) accounts



IntraGère

webersa

Computer @ IGE
Intragère
(web)mail
...



Agalan

webersa

University services
*chamilo, jupyter, gitlab,
intranet, ficel, ...*
Eduroam & Wifi-Campus



Janus

samuel.weber@univ-
grenoble-alpes.fr

CNRS services
bibcnrs, mycore, ...
Agate (holidays)

All others are kind of linked to it

And if you are IRD: **Sorgho**

Federation stuff:

Renater

Visioconf, evento, wiki, ...

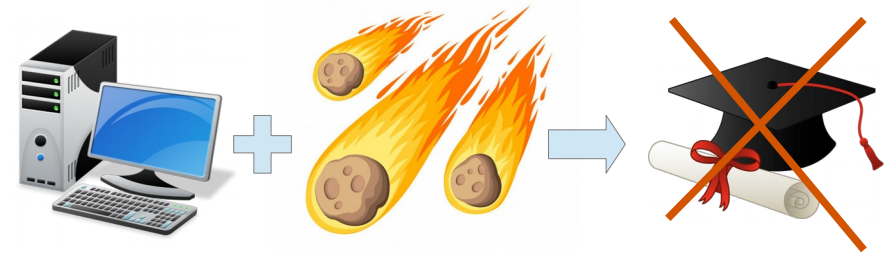
International

„Connect with your institution“

IT in the lab



- Shared folder „equipes“: `K:/` or `/mnt/login/equipes/IGE/`
- **Backup your PC!** (sauvegarde folder of equipes)
 - Windows: Cobian backup
 - Linux rsync
- Computing services:
 - `srv12.lthe.fr` & `srv11.lthe.fr`
 - Need meteo file/reanalysis/code? Ask!
- You can access your computer remotly! (doc intragere)
- Mail: webmail (<http://mail.ige-grenoble.fr>) or Thunderbird



IT services: elsewhere

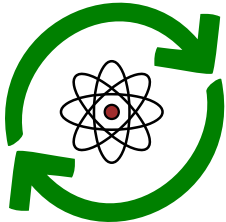


OSUG



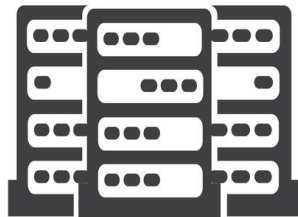
My-core (Janus): <https://mycore.cnrs.fr>

Nextcloud OSUG (Agalan): <https://nextcloud.osug.fr>



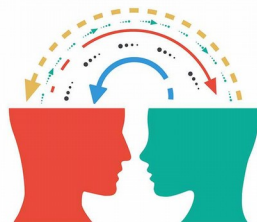
Jupyter (Agalan): <https://jupyterhub.u-ga.fr>

Gitlab (Agalan): <https://gricad-gitlab.univ-grenoble-alpes.fr>



Meso-centre de calcul CIMENT:

<https://gricad.univ-grenoble-alpes.fr/catalogue-services/calcul-intensif-ciment>



Pad, tableur, wiki, ...

<https://intranet.osug.fr/Outils-Collaboratifs-84>

GIS:

<https://intranet.osug.fr/Gestion-de-donnees>

Other

- Guide for PhD at IGE!! (fr) & (en)
- Wiki GLACE team :
https://sourcesup.renater.fr/wiki/wiki-glance/main_page:starting_at_ige
- Social:
 - Friday beer: come and share a beer!
 - PhD weekend
 - LaiTUE (for all PhD of the doctoral school)
- Other questions?
 - Don't hesitate to talk to each others!

Questions?

Buffet?



Au bon sens des mets